



# ZF806-HDS

## 6 [159] WIDE REVEAL FIBER REINFORCED POLYMER TRENCH DRAIN SYSTEM W/HEAVY-DUTY STAINLESS STEEL FRAME

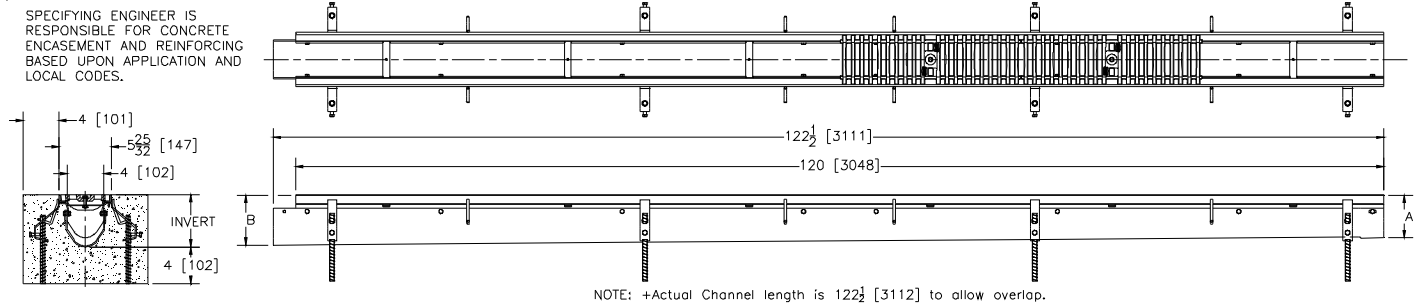


Supplied By: **877-903-7246**  
www.trenchdrainsupply.com

SPECIFICATION SHEET

TAG \_\_\_\_\_

Dimensional Data (inches and [ mm ]) are Subject to Manufacturing Tolerances and Change Without Notice



### ENGINEERING SPECIFICATION: Zurn ZF806-HDS

Channels shall be 120 [3048] long, 6 [152] wide and have a 4 [102] throat. Modular channel sections shall be made of Fiber Reinforced Polymer (FRP). Shall have a positive mechanical connection between channel sections that will not separate during the installation. Channels shall weigh less than 2.31 lbs.[1.05kg] per linear foot, have a smooth, 1-1/2 [38] radiused self cleaning bottom with a Manning's coefficient of .009 and .75% or neutral 0% built in slope. Shall be provided with standard SBG grates that lock down to frame. Zurn 6 [152] wide reveal Stainless Steel Cast Bar Grate conforming to ASTM specification A351, Grade CF8 (Type 304). Cast grate is rated class E per the DIN EN1433 top load classifications. Supplied in 20 [508] nominal lengths with 1/2 [13] wide slots, and 3/4 [19] bearing depth. Grate has an open area of 28.6 sq. in per ft. [60,521 sq. mm per meter]. The #10 gage thick Heavy-Duty Stainless Steel Frame Assembly conforms to ASTM specification A240 (Type 304). Frames shall mechanically lock into the concrete surround at a maximum spacing of every 20 [508] with 16 concrete anchors per 120 [3048]. Frames shall have rebar attachment brackets as standard to secure trench in its final location. Grate lockdown bars are to be integral to the frame. All welds must be performed by a certified welder per ASTM standard AWS D1.6. Frames and Channels shall be produced in the U.S.A.

### PREFIX OPTIONS (Check/specify appropriate options)

\_\_\_ ZF Ten-foot Fiber Reinforced Polymer (FRP)\*

### SUFFIX OPTIONS (Check/specify appropriate options)

#### Outlet Adapters Add/Each

- \_\_\_ -E1 Closed End Cap
- \_\_\_ -E2 2 [51] No-Hub End Outlet
- \_\_\_ -E3 3 [76] No-Hub End Outlet
- \_\_\_ -E4 4 [102] No-Hub End Outlet
- \_\_\_ -E6 6 [152] No-Hub End Outlet
- \_\_\_ -U2 2 [51] No-Hub Bottom Outlet
- \_\_\_ -U3 3 [76] No-Hub Bottom Outlet
- \_\_\_ -U4 4 [102] No-Hub Bottom Outlet
- \_\_\_ -U6 6 [152] No-Hub Bottom Outlet

#### Grate Options (Load Classifications are per DIN EN1433)

- \_\_\_ -BDC Black Acid Resistant Epoxy Coated Ductile Grate - Class C
- \_\_\_ -BDE Black Acid Resistant Epoxy Coated Ductile Grate - Class E
- \_\_\_ -DC Ductile Iron Solid Cover - Class C
- \_\_\_ -DBG Ductile Iron Cast Bar Grate - Class C
- \_\_\_ -DGC Ductile Iron Slotted Grate - Class C
- \_\_\_ -DGE Ductile Iron Slotted Grate - Class E
- \_\_\_ -HPD Heel-Proof Ductile Slotted Grate - Class B
- \_\_\_ -HPDE Heel-Proof Ductile Slotted Grate - Class E
- \_\_\_ -HPP Heel-Proof Polyethylene Grate - Class A
- \_\_\_ -LD Ductile Iron Longitudinal Slotted Grate - Class B
- \_\_\_ -RFSC Reinforced Slotted Stainless Steel Grate - Class C
- \_\_\_ -RPSC Reinforced Perforated Stainless Steel Grate - Class C
- \_\_\_ -RPSRC Reinforced Perforated Stainless Steel Reversed Punch Grate - Class C

#### Miscellaneous Options

- \_\_\_ -DB Bottom Dome Strainer
- \_\_\_ -JC Joint Connector
- \_\_\_ -VP Vandal-Proof Lockdown

#### Decorative Grate Options (Load Classifications are per DIN EN1433)

- \_\_\_ -BCD Bronze Circular Decorative Grate - Class A
- \_\_\_ -BDD Bronze Diagonal Decorative Grate - Class A
- \_\_\_ -DCD Ductile Iron Circular Decorative Grate - Class C
- \_\_\_ -DDD Ductile Iron Diagonal Decorative Grate - Class A
- \_\_\_ -DOG Ductile Iron Decorative Grate - Class A
- \_\_\_ -DWV Ductile Wave Decorative Grate - Class A
- \_\_\_ -HPB Heel-Proof Bronze Slotted Grate - Class A
- \_\_\_ -HPS Heel-Proof Stainless Steel Slotted Grate - Class A
- \_\_\_ -SBG Stainless Steel Bar Grate - Class E \*
- \_\_\_ -SCD Stainless Steel Circular Decorative Grate - Class B
- \_\_\_ -SDD Stainless Steel Diagonal Decorative Grate - Class B
- \_\_\_ -SOG Stainless Steel Decorative Grate - Class B

Trench No.	'A' Shallow Inv.	'B' Deep Inv.	Flow		
			(cfs)	(gpm)	(lps)
1002	4.75 [121]	5.65 [144]	.326	146	9
1002N	5.65 [144]	5.65 [144]	-	-	-
1003	5.65 [144]	6.55 [166]	.427	192	12
1004	6.55 [166]	7.45 [189]	.530	238	15
1004N	7.45 [189]	7.45 [189]	-	-	-
1005	7.45 [189]	8.35 [212]	.635	285	18
1006	8.35 [212]	9.25 [235]	.740	332	21
1007	9.25 [235]	10.15 [258]	.845	379	24
1008	10.15 [258]	11.05 [281]	.951	427	27
1008N	11.05 [281]	11.05 [281]	-	-	-
1009	11.05 [281]	11.95 [304]	1.058	475	30
1010	11.95 [304]	12.85 [326]	1.164	523	33

#### Note:

The maximum fluid temperature through the system must not exceed 150°F [66°C] and the range (Max. Temp. to Min. Temp.) must not exceed 100°F [38°C].

#### MADE in the U.S.A. (Load Classifications are per DIN EN1433)

- \_\_\_ -BDE-USA Black Acid Resistant Epoxy Coated Ductile Grate - Class E
- \_\_\_ -DGC-USA Ductile Iron Slotted Grate - Class C
- \_\_\_ -DGE-USA Ductile Iron Slotted Grate - Class E
- \_\_\_ -FS Fabricated Stainless Steel Slotted Grate - Class A
- \_\_\_ -HPDE-USA Heel-Proof Ductile Slotted Grate - Class E
- \_\_\_ -PS Perforated Stainless Steel Grate - Class A
- \_\_\_ -PPC Plastic Perforated Grate - Class C

#### Decorative MADE in the U.S.A. (Load Classifications are per DIN EN1433)

- \_\_\_ -BZ Bronze Decorative Grate - Class A
- \_\_\_ -NBZ Nickel Bronze Decorative Grate - Class A
- \_\_\_ -PSR Perforated Stainless Steel Raised Grate - Class A
- \_\_\_ -SWG Stainless Steel Wire Grate - Class A

\* Regularly furnished unless otherwise specified.

Zurn Industries, LLC | Specification Drainage Operation  
1801 Pittsburgh Avenue, Erie, PA U.S.A. 16502 · Ph. 855-663-9876, Fax 814-454-7929

In Canada | Zurn Industries Limited  
3544 Nashua Drive, Mississauga, Ontario L4V 1L2 · Ph. 905-405-8272, Fax 905-405-1292

www.zurn.com

Rev. E  
Date: 07/23/14  
C.N. No. 131257  
Prod. | Dwg. No. ZF806-HDS